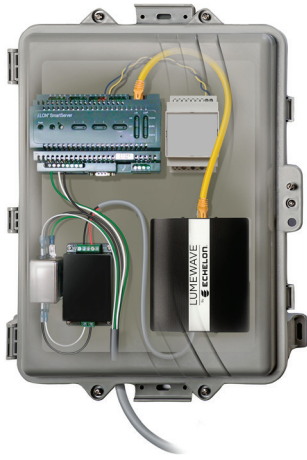


Lumewave PL-RF Gateway



Enclosure and component configuration images for illustration purposes only; 277V step down transformer not shown; see page 2 for enclosure specifications and photo.

Product Description

The Lumewave PL-RF Gateway by Echelon connects otherwise disparate lighting control protocols to create a single seamless intelligent network. An industry exclusive, the gateway enables communication between a power line control network and a wireless control network. By integrating two of the most widely used lighting networks, the gateway connects lights traditionally impossible to modernize with smart controls including decorative, pathway, tunnel, and garage lighting. Through the gateway, data captured by all lighting controllers are transmitted to a single central management system (CMS) for monitoring and managing the complete lighting network.

Operation

Typically installed into an electrical cabinet, the gateway connects a power line controlled segment to a Lumewave RF gateway, enabling a single CMS to communicate with the wireless and wired lighting networks. Multiple PL-RF gateways can connect to RF lighting networks to create a truly hybrid network.

Specifications/Submittal Block

Project:

Date:

Detail:

Features/Benefits

- Integrates power line and RF wireless lighting networks
- Enables management of PL and RF networks through a single central management software
- Compatible with most lamp types, including LED, eHID, plasma, and induction
- Provides capabilities for:
 - Asset management
 - Group and scene settings
 - Alerts and notifications about general status, current lighting levels, and alarm status
 - Energy reporting
- Prevents data loss in the event of power outage or power cycle
- Secure AES 128-bit encryption

Applications

- Decorative and pathway lighting
- Tunnel and roadway lighting
- Indoor/outdoor parking garage lighting
- Transport stations

Product Specifications

Hardware Specifications

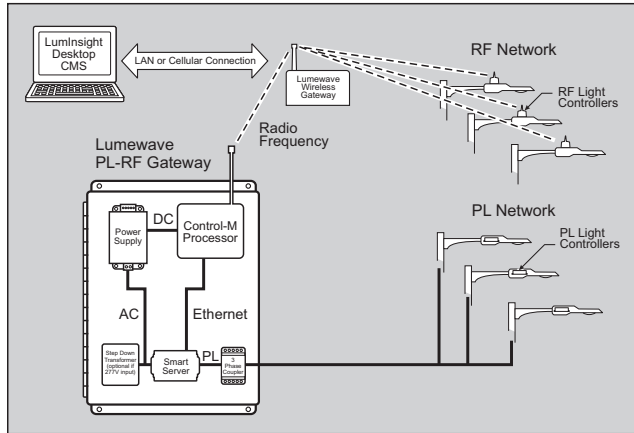
- Supported protocols: LON (ISO/IEC 14908-3 Power Line) and 802.15.4 (Control M)
- Interface to PL: single or 3 phase
- Control software: LumInsight Desktop version 5.1
- Input voltage: 120-240 VAC 50/60 Hz; 277 VAC requires step down transformer
- Operating temperature: -40C to +70C
- IP rating: available as kit (no IP rating) or in a NEMA enclosure (IP66)
- 5-year limited warranty*
- UL Listed components
- FCC compliant

Specifications for Optional Enclosure

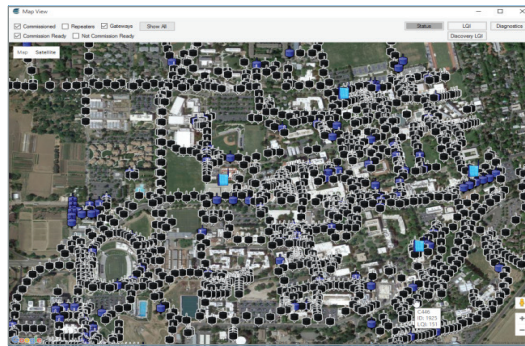
- NEMA 4X, IP 66 rated
- 16 gauge stainless steel type 304
- Smooth grain enclosure finish
- Seams continuously welded and ground smooth
- Stainless steel screw-down clamps on three sides of door
- Sealed with poured-in-place polyurethane gasket
- 16" x 14" x 6" (H x W X D)
- UL 50 Listed



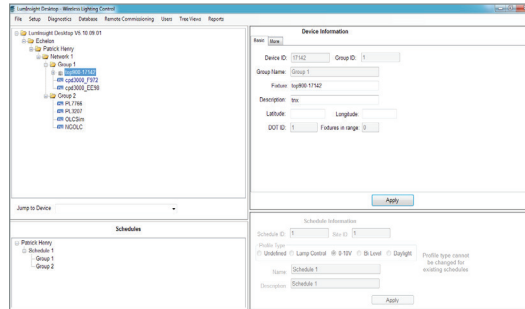
Lighting Control System



LumInsight Desktop User Interface



Map view showing commissioned lights.



Device and schedule management interface.

Ordering Information:

Ordering #	Product Name	Product Description
100198	Lumewave PL-RF Gateway with Enclosure	Gateway device for power line to RF integration in NEMA 4X enclosure

*Subject to terms and conditions found at http://echelon.com/lp/warranty_five_year

Copyright © 2016, Echelon Corporation. Echelon, LumInsight, and the Echelon logo are trademarks of Echelon Corporation that may be registered in the United States and/or other countries. Other trademarks belong to their respective holders.